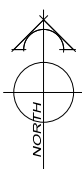


AMENDMENT	DATE	DESCRIPTION
R1	12.2.13	RAFTING ADDED

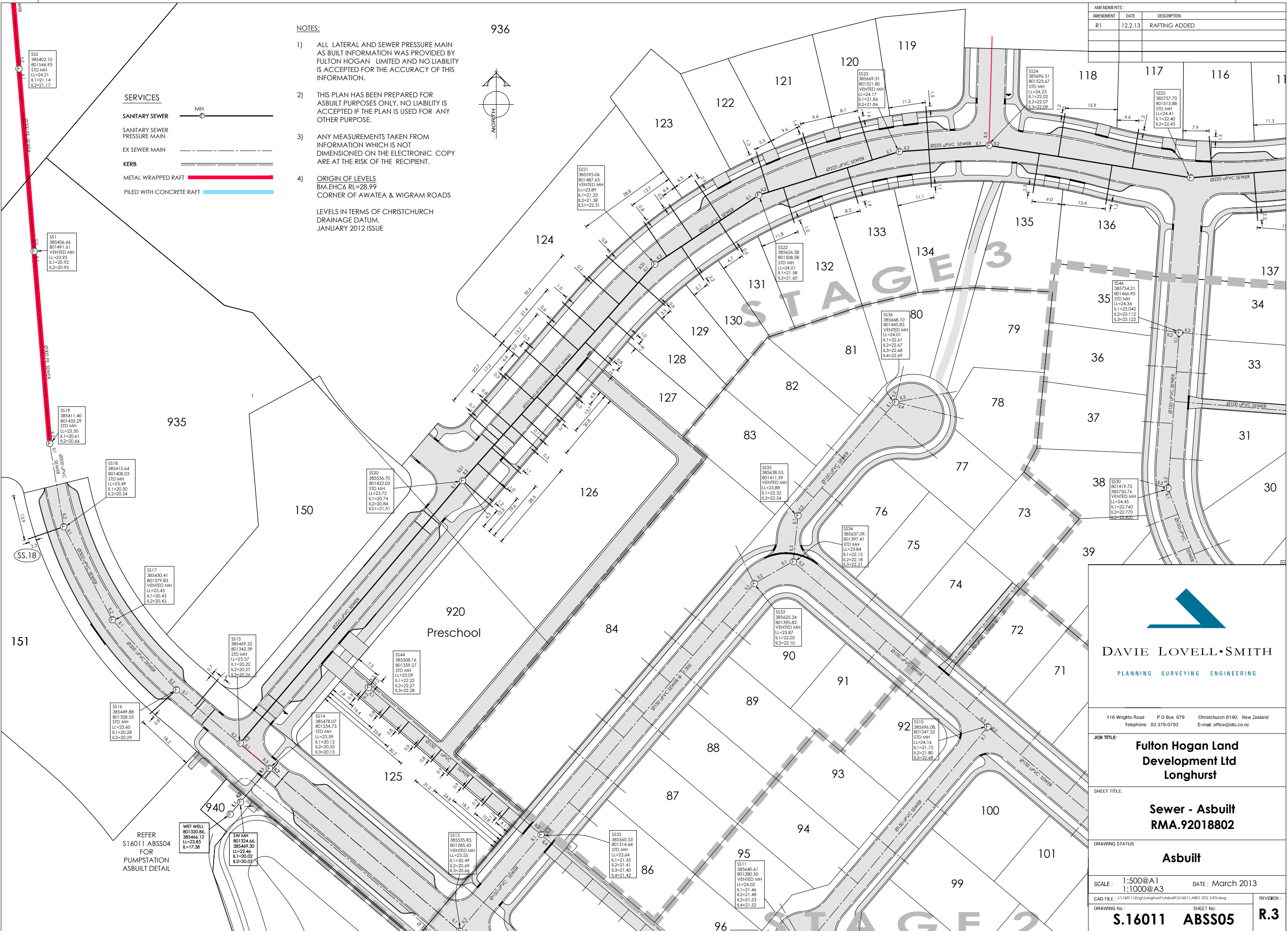
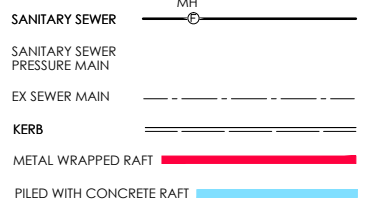
NOTES:

- 1) ALL LATERAL AND SEWER PRESSURE MAIN AS BUILT INFORMATION WAS PROVIDED BY FULTON HOGAN LIMITED AND NO LIABILITY IS ACCEPTED FOR THE ACCURACY OF THIS INFORMATION.
 - 2) THIS PLAN HAS BEEN PREPARED FOR ASBUILT PURPOSES ONLY. NO LIABILITY IS ACCEPTED IF THE PLAN IS USED FOR ANY OTHER PURPOSE.
 - 3) ANY MEASUREMENTS TAKEN FROM INFORMATION WHICH IS NOT DIMENSIONED ON THE ELECTRONIC COPY ARE AT THE RISK OF THE RECIPIENT.
 - 4) ORIGIN OF LEVELS
BM.EHC6 RL=28.99
CORNER OF AWATEA & WIGRAM ROADS
- LEVELS IN TERMS OF CHRISTCHURCH DRAINAGE DATUM.
JANUARY 2012 ISSUE

936



SERVICES



DAVIE LOVELL • SMITH
PLANNING SURVEYING ENGINEERING

116 Wrights Road P O Box 679 Christchurch 8140, New Zealand
Telephone: 03 379-0793 E-mail: office@dls.co.nz

JOB TITLE:
Fulton Hogan Land Development Ltd Longhurst

SHEET TITLE:
Sewer - Asbuilt RMA.92018802

DRAWING STATUS:
Asbuilt

SCALE: 1:500@A1
1:1000@A3

DATE: March 2013

DRAWING No: S.16011 ABSS05

SHEET No: R.3

REFER S16011 ABSS04 FOR PUMPSTATION ASBUILT DETAIL

WET WELL
801320.86
385466.12
LL=23.85
IL=17.38

SW MH
801324.66
385469.30
LL=22.46
IL=20.02
IL2=20.02

SS13
385535.83
801285.43
STD MH
LL=23.55
IL1=20.49
IL2=20.49
IL3=20.64

SS32
385560.53
801314.44
STD MH
LL=23.64
IL1=21.35
IL2=21.48
IL3=21.40
IL4=21.42

SS11
385640.61
801280.50
STD MH
LL=24.02
IL1=21.46
IL2=21.48
IL3=21.53
IL4=21.52

SS10
385696.08
801347.33
STD MH
LL=24.16
IL1=21.75
IL2=21.80
IL3=22.68

SS33
385625.24
801390.82
VENTED MH
LL=23.87
IL1=22.05
IL2=22.10

SS34
385637.09
801397.41
STD MH
LL=23.84
IL1=22.15
IL2=22.18
IL3=22.21

SS35
385638.53
801411.39
VENTED MH
LL=23.88
IL1=22.32
IL2=22.34

SS36
385668.10
801445.83
VENTED MH
LL=24.01
IL1=22.61
IL2=22.67
IL3=22.68
IL4=22.69

SS46
385754.21
801466.90
STD MH
LL=24.36
IL1=23.042
IL2=23.112
IL3=23.122

SS33
801419.72
385750.76
VENTED MH
LL=24.45
IL1=22.760
IL2=22.770

SS21
385595.04
801487.63
VENTED MH
LL=23.89
IL1=21.33
IL2=21.38
IL3=22.31

SS22
385626.58
801508.58
STD MH
LL=24.01
IL1=21.58
IL2=21.60

SS24
385696.51
801523.67
STD MH
LL=24.23
IL1=22.02
IL2=22.07
IL3=22.02

SS25
385757.70
801513.88
STD MH
LL=24.41
IL1=22.40
IL2=22.43

SS2
385402.10
801546.93
STD MH
LL=24.21
IL1=21.14
IL2=21.17

SS1
385406.66
801491.61
VENTED MH
LL=23.95
IL1=20.92
IL2=20.93

SS19
385411.40
801433.29
STD MH
LL=23.50
IL1=20.61
IL2=20.66

SS18
385415.64
801408.03
STD MH
LL=23.49
IL1=20.50
IL2=20.54

SS17
385430.41
801379.83
VENTED MH
LL=23.43
IL1=20.43
IL2=20.43

SS15
385469.22
801342.39
STD MH
LL=23.57
IL1=20.22
IL2=20.27
IL3=20.24

SS16
385449.88
801358.55
STD MH
LL=23.60
IL1=20.28
IL2=20.29

SS14
385478.07
801334.73
STD MH
LL=23.59
IL1=20.12
IL2=20.35
IL3=20.15

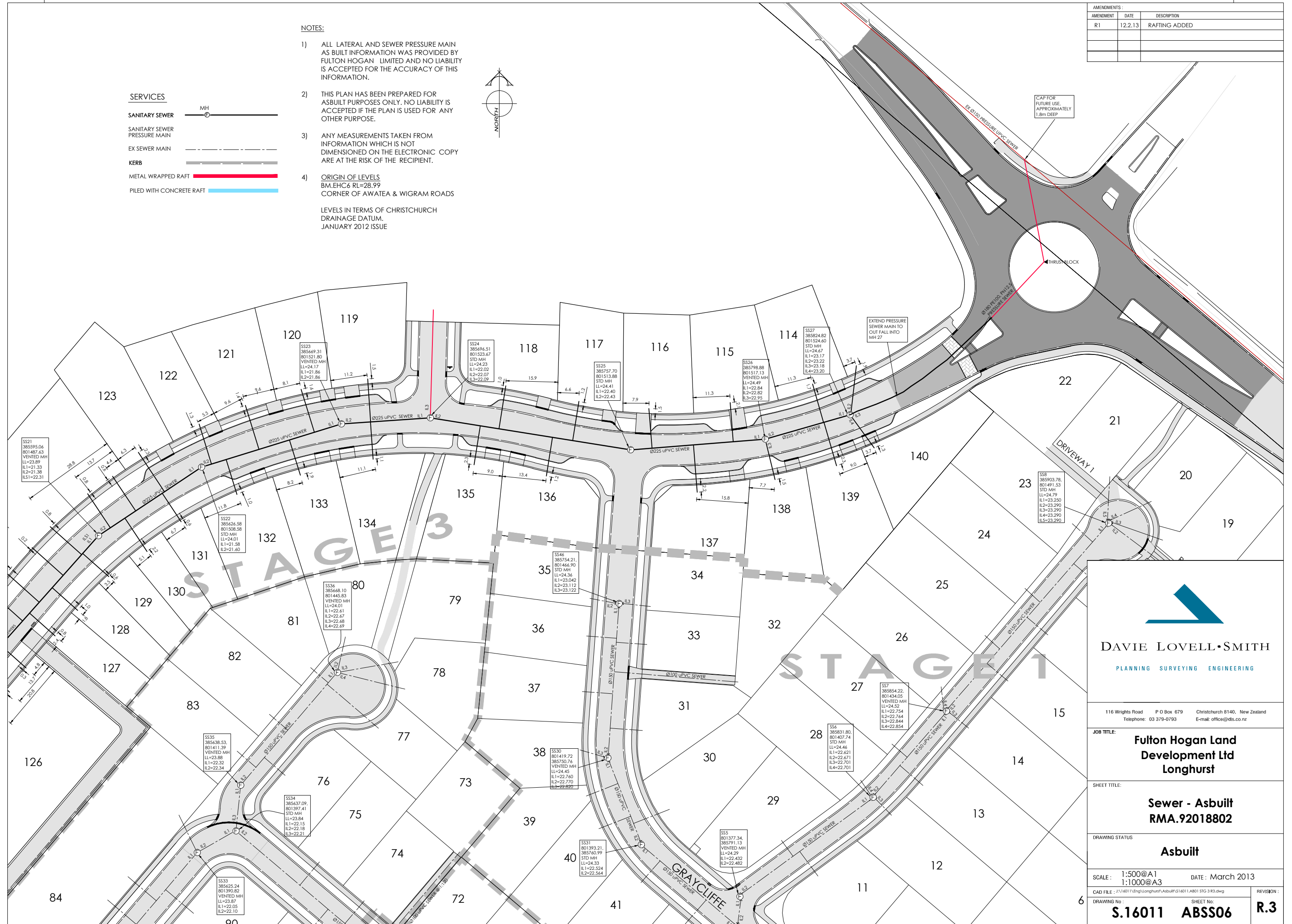
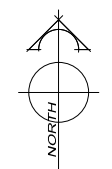
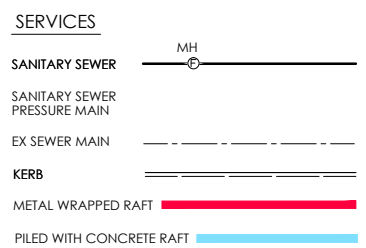
SS44
385508.16
801359.27
STD MH
LL=23.09
IL1=22.22
IL2=22.27
IL3=22.28

SS20
385536.70
801422.03
STD MH
LL=23.72
IL1=20.74
IL2=20.84
IL3=21.51

AMENDMENTS		
AMENDMENT	DATE	DESCRIPTION
R1	12.2.13	RAFTING ADDED

- NOTES:
- 1) ALL LATERAL AND SEWER PRESSURE MAIN AS BUILT INFORMATION WAS PROVIDED BY FULTON HOGAN LIMITED AND NO LIABILITY IS ACCEPTED FOR THE ACCURACY OF THIS INFORMATION.
 - 2) THIS PLAN HAS BEEN PREPARED FOR ASBUILT PURPOSES ONLY. NO LIABILITY IS ACCEPTED IF THE PLAN IS USED FOR ANY OTHER PURPOSE.
 - 3) ANY MEASUREMENTS TAKEN FROM INFORMATION WHICH IS NOT DIMENSIONED ON THE ELECTRONIC COPY ARE AT THE RISK OF THE RECIPIENT.
 - 4) ORIGIN OF LEVELS
 BM.EHC6 RL=28.99
 CORNER OF AWATEA & WIGRAM ROADS

 LEVELS IN TERMS OF CHRISTCHURCH DRAINAGE DATUM.
 JANUARY 2012 ISSUE



DAVIE LOVELL • SMITH
 PLANNING SURVEYING ENGINEERING

116 Wrights Road P O Box 679 Christchurch 8140, New Zealand
 Telephone: 03 379-0793 E-mail: office@dls.co.nz

JOB TITLE: Fulton Hogan Land Development Ltd Longhurst

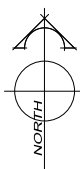
SHEET TITLE: Sewer - Asbuilt RMA.92018802

DRAWING STATUS: Asbuilt

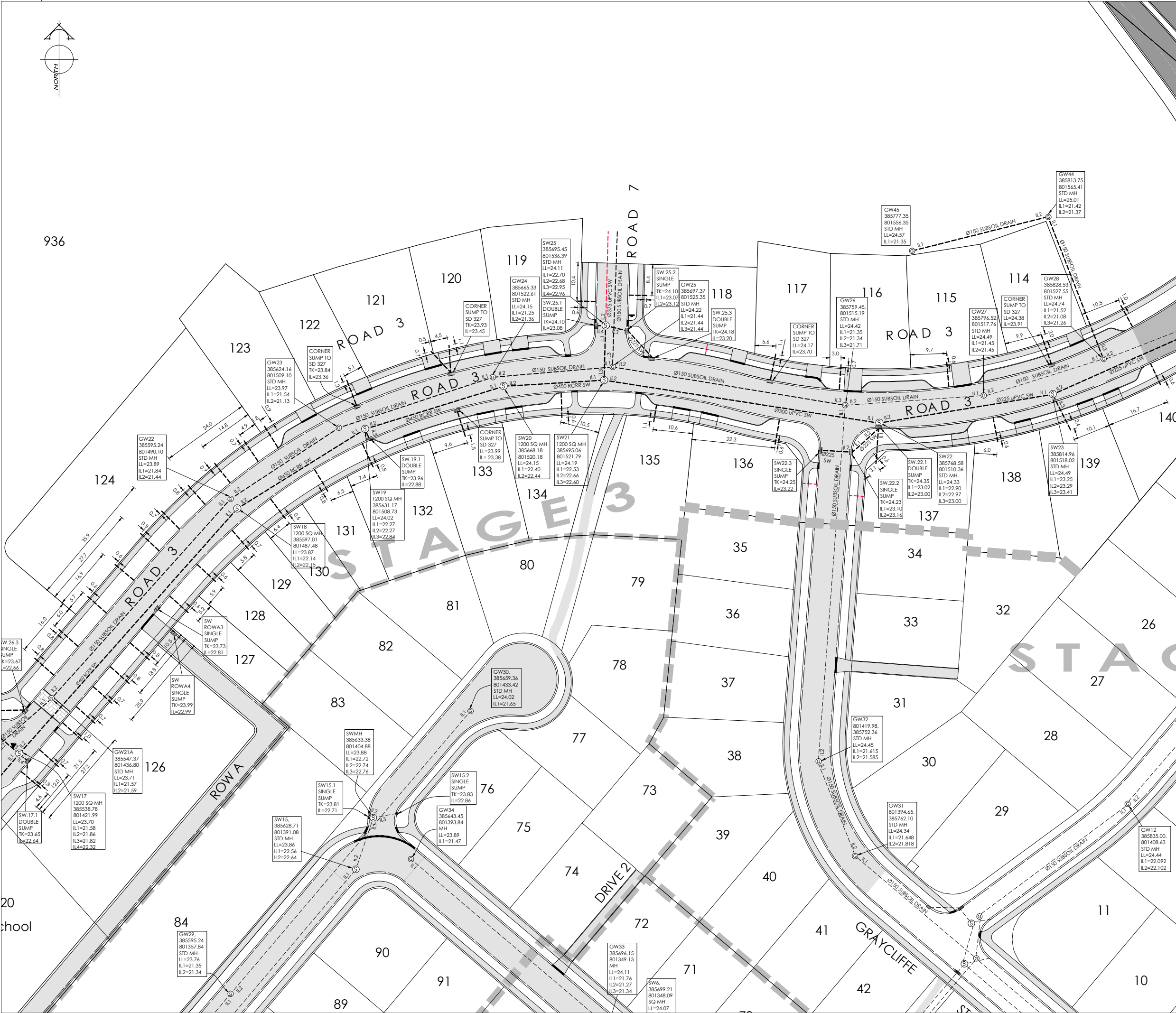
SCALE: 1:500@A1 DATE: March 2013
 1:1000@A3

CAD FILE: J:\1601\Eng\Longhurst\Asbuilt\16011.AB01 STG 3 R3.dwg REVISION:

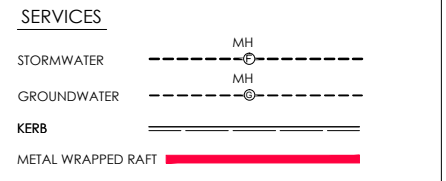
DRAWING No: **S.16011** SHEET No: **ABSS06** **R.3**



AMENDMENT	DATE	DESCRIPTION
R1	12.2.13	RAFTING ADDED



- NOTES:**
- 1) ALL LATERAL AS BUILT INFORMATION WAS PROVIDED BY FULTON HOGAN LIMITED & CITY CARE LIMITED AND NO LIABILITY IS ACCEPTED FOR THE ACCURACY OF THIS INFORMATION.
 - 2) THIS PLAN HAS BEEN PREPARED FOR ASBUILT PURPOSES ONLY. NO LIABILITY IS ACCEPTED IF THE PLAN IS USED FOR ANY OTHER PURPOSE.
 - 3) ANY MEASUREMENTS TAKEN FROM INFORMATION WHICH IS NOT DIMENSIONED ON THE ELECTRONIC COPY ARE AT THE RISK OF THE RECIPIENT.
 - 4) ORIGIN OF LEVELS
BM.EHC6 RL=28.99
CORNER OF AWATEA & WIGRAM ROADS
- LEVELS IN TERMS OF CHRISTCHURCH DRAINAGE DATUM. JANUARY 2012 ISSUE



NAME	SIGNED	DATE
DESIGNED BY: MATTHEW WENBORN		
CHECKED BY: ANDY HALL		

DAVIE LOVELL • SMITH
PLANNING SURVEYING ENGINEERING

116 Wrights Road P O Box 679 Christchurch 8140. New Zealand
Telephone: 03 379-0793 E-mail: office@dls.co.nz

JOB TITLE:
Fulton Hogan Land Development Ltd Longhurst

SHEET TITLE:
Stormwater - Asbuilt RMA.92018802

DRAWING STATUS:
Asbuilt

SCALE: 1:500@A1 DATE: March 2013
1:1000@A3

CAD FILE: J:\16011\Eng\Longhurst\Asbuilt\SI6011.A801 STG 3 R3.dwg REVISION:
DRAWING No: SHEET No:
S.16011 ABSW04 R.3



AMENDMENTS:		
AMENDMENT	DATE	DESCRIPTION
R1	12.2.13	RAFTING ADDED

NOTES:

- 1) ALL AS BUILT INFORMATION WAS PROVIDED BY FULTON HOGAN LIMITED & CITY CARE LIMITED AND NO LIABILITY IS ACCEPTED FOR THE ACCURACY OF THIS INFORMATION.
- 2) THIS PLAN HAS BEEN PREPARED FOR ASBUILT PURPOSES ONLY. NO LIABILITY IS ACCEPTED IF THE PLAN IS USED FOR ANY OTHER PURPOSE.
- 3) ANY MEASUREMENTS TAKEN FROM INFORMATION WHICH IS NOT DIMENSIONED ON THE ELECTRONIC COPY ARE AT THE RISK OF THE RECIPIENT.
- 4) ORIGIN OF LEVELS
BM.EHC6 RL=28.99
CORNER OF AWATEA & WIGRAM ROADS

LEVELS IN TERMS OF CHRISTCHURCH DRAINAGE DATUM.
JANUARY 2012 ISSUE

SERVICES

EXISTING WATER	VALVE	FIRE HYDRANT	END CAP
AS BUILT WATER	VALVE	FIRE HYDRANT	END CAP
KERB			

NAME	SIGNED	DATE
DESIGNED BY MATTHEW WENBORN		
CHECKED BY ANDY HALL		

DAVIE LOVELL • SMITH
PLANNING SURVEYING ENGINEERING

116 Wrights Road P.O. Box 679 Christchurch 8140. New Zealand
Telephone: 03 379-0793 E-mail: office@ds.co.nz

JOB TITLE:
Fulton Hogan Land Development Ltd Longhurst

SHEET TITLE:
Water - Asbuilt RMA.92018802

DRAWING STATUS:
Asbuilt

SCALE: 1:500@A1 DATE: March 2013
1:1000@A3

CAD FILE: J:\16011\Eng\Longhurst\Asbuilt\S16011.AB01 STG 3 R3.dwg REVISION:
DRAWING No: SHEET No:
S.16011 ABW05 R.3